

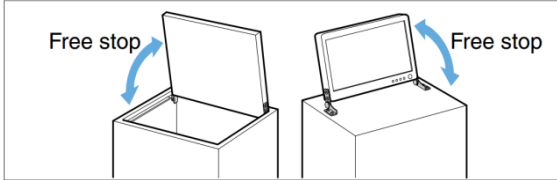
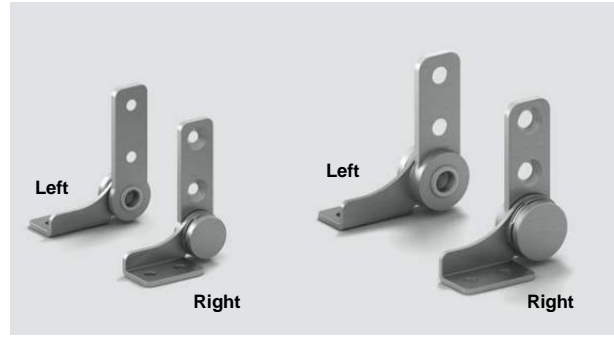
## GHG-TB Stainless Steel Torque Hinge

### Features

- Hinge with friction torque holds lid / door in desired position
- Provides torque stability in both directions
- Passed 20,000 life cycle test

### Notes

- Operating temperature: 0°C ~ 40°C
- For pair usage: to use the same torque for both hinges
- Ensure hinge shafts are levelled and aligned during installation



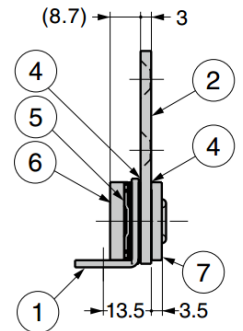
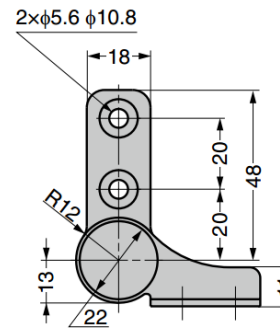
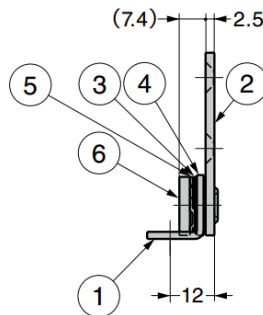
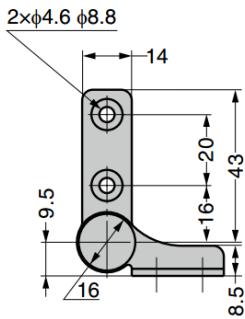
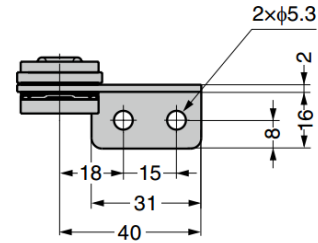
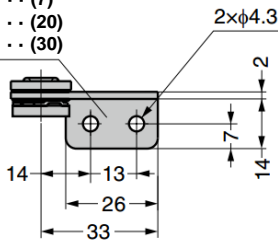
No.	Part Name	Material	Finish
①	Bracket	Stainless Steel (SUS430)	Barrel Polished
②	Base		
③	F Plate A	Bronze	-
④	F Plate B		
⑤	Spring Washer	Steel	
⑥	Shaft	Stainless Steel (SUS303)	
⑦	Washer	Stainless Steel (SUS430)	Barrel Polished

### Marking:

GHG-TB7 ... (7)

GHG-TB20 ... (20)

GHG-TB30 ... (30)



GHG-TB7L, GHG-TB20L, GHG-TB30L

GHG-TB45L

Left-handed type shown. Right-handed type is symmetrical.

Part No.	Type	Torque (per piece)	
GHG-TB7R	Right Handed	0.7 ±20% N.m	7.1 ±20% kgf.cm
GHG-TB7L	Left Handed		
GHG-TB20R	Right Handed	2.0 ±20% N.m	20.4 ±20% kgf.cm
GHG-TB20L	Left Handed		
GHG-TB30R	Right Handed	3.0 ±20% N.m	30.6 ±20% kgf.cm
GHG-TB30L	Left Handed		
GHG-TB45R	Right Handed	4.5 ±20% N.m	45.9 ±20% kgf.cm
GHG-TB45L	Left Handed		